



SPECIFICATION SHEET 16 GAUGE UNDERCOUNTER DISH TABLES



SPECS:

Standard Undercounter Dish Table, "L" designates left-to-right operation, "R" designates right-to-left operation, 16 gauge S/S 300 series top and bowl, 8" backsplash with 2" return, stainless steel leg gussets, galvanized legs and adjustable polymer feet, NSF approved

FEATURES:

Material: 16 Ga 300 Stainless steel
Backsplash: 10"H with 2" Return (clip down)
Bowl: 20"W x 20"L x 6"D (52 models)
Bowl: 20"W x 20"L x 8"D (60 models)
Edge: Raised 1.5" Rolled edge
Legs and Bracing: 1 5/8" Galvanized steel
Feet: Polymer bullet feet (adjustable)
Basket Strainer: 3.5" (included)

SOILED DISH TABLES:

16-UDTG-52L / 16-UDTG-52R

16-UDTG-60L / 16-UDTG-60R

OPTIONS:

Stainless Steel Legs and Bracing and Feet

CONSTRUCTION:

Top and Bowl: 16 Gauge 300 series stainless steel

Leg Gussets: Stainless steel

Legs and Bracing: 1 5/8" Galvanized steel

Feet: 1" Adjustable high impact polymer bullet style

PLUMBING:

1 1/8" Faucet holes on 8" centers

3.5" Waste drain



FENIX SOL

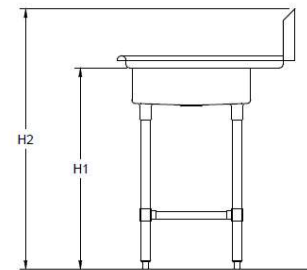
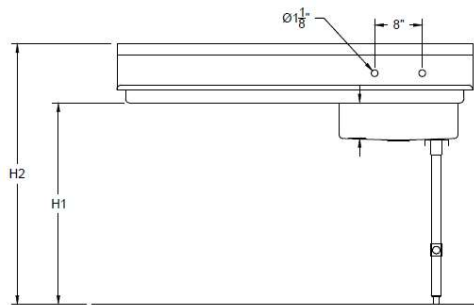
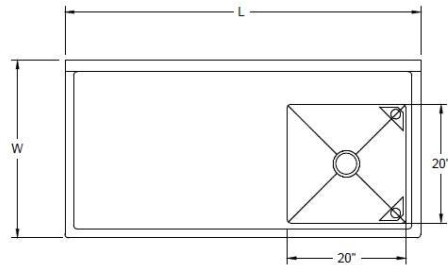
2441 Merchantile Dr. Ste B
Rancho Cordova, CA 95742

844-650-5738
info@fenixsol.com
www.fenixsol.com



SPECIFICATION SHEET

16 GAUGE UNDERCOUNTER DISH TABLES



| 16 GAUGE 304 S/S UNDERCOUNTER DISH TABLE | | | | | | |
|--|--------------|-------|--------|--------|--------|-------------|
| MODEL NUMBER | OVERALL SIZE | | | | | |
| | LENGTH | WIDTH | HEIGHT | HEIGHT | WEIGHT | BACK SPLASH |
| | L | W | H1 | H2 | | |
| 16-UDTG-52L | 52 | 30 | 34 | 42 | 65 | 8 |
| 16-UDTG-52R | 52 | 30 | 34 | 42 | 65 | 8 |
| 16-UDTG-60L | 60 | 30 | 34 | 42 | 75 | 8 |
| 16-UDTG-60R | 60 | 30 | 34 | 42 | 75 | 8 |