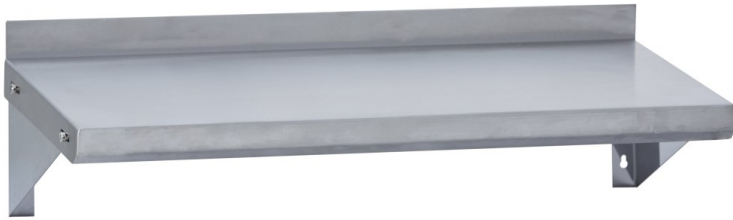




SPECIFICATION SHEET 18 GAUGE WALL MOUNTED SHELF



SPECS:

Standard Wall Mounted Shelves, shelf mounts directly to wall, mounting hardware is not included, 18 gauge S/S 400 series top, stainless brackets, NSF approved

FEATURES:

Material: 18 Ga 400 Series Stainless Steel

Brackets: Stainless Steel

NSF Certified: Yes

WALL MOUNTED SHELVES:

18-4-WMS-12X24 / 18-4-WMS-18X24

18-4-WMS-12X36 / 18-4-WMS-18X36

18-4-WMS-12X48 / 18-4-WMS-18X48

18-4-WMS-12X60 / 18-4-WMS-18X60

18-4-WMS-12X72 / 18-4-WMS-18X72

18-4-WMS-12X84 / 18-4-WMS-18X84

18-4-WMS-12X96 / 18-4-WMS-18X96

All shelves over 72" include 3 stainless steel support brackets. All shelves shipped knocked down.

CONSTRUCTION:

Top: 18 Gauge 400 series stainless steel

Brackets: Stainless Steel

Height: 7.5"



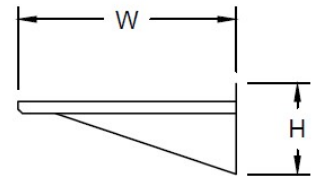
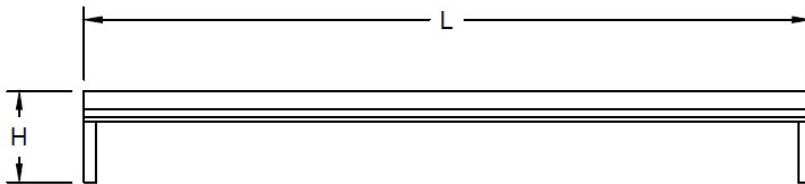
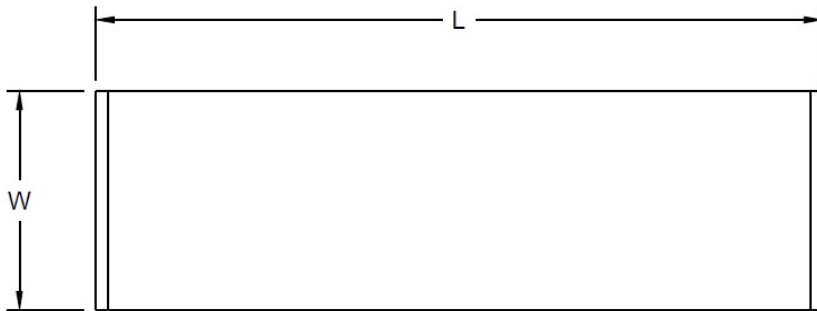
FENIX SOL

2441 Merchantile Dr. Ste B
Rancho Cordova, CA 95742

844-650-5738
info@fenixsol.com
www.fenixsol.com



SPECIFICATION SHEET
18 GAUGE S/S TABLE MOUNTED SHELF – SINGLE TIER



All wall mounted shelves are shipped knocked down. Shelves over 72” have 3 support brackets.

18 GA. 430 S/S SINGLE TIER TABLE MOUNTED SHELF					
MODEL NUMBER	OVERALL SIZE				
	WIDTH	LENGTH	HEIGHT	WEIGHT	QTY PER BOX
	W	L	H		
18-4-WMS-12X24	12	24	6.5	10	1
18-4-WMS-12X36	12	36	6.5	15	1
18-4-WMS-12X48	12	48	6.5	18	1
18-4-WMS-12X60	12	60	6.5	21	1
18-4-WMS-12X72	12	72	6.5	23	1
18-4-WMS-12X84	12	84	6.5	25	1
18-4-WMS-12X96	12	96	6.5	27	1
18-4-WMS-18X24	18	24	6.5	12	1
18-4-WMS-18X36	18	36	6.5	17	1
18-4-WMS-18X48	18	48	6.5	21	1
18-4-WMS-18X60	18	60	6.5	24	1
18-4-WMS-18X72	18	72	6.5	22	1
18-4-WMS-18X84	18	84	6.5	25	1
18-4-WMS-18X96	18	96	6.5	29	1