



SPECIFICATION SHEET

12" DEEP ONE COMPARTMENT 18 GAUGE S/S SINKS



12" DEEP ECONOMY SERIES SINKS:

18G-1C16X20-R18

18G-1C18X18-R18

18G-1C18X24-R18

OPTIONS:

Pre-Rinse Units and Faucets

Lever Drains

Stainless Steel Legs and Bracing

SPECS:

12" Deep Economy Series Sink, one compartment, right drainboard, 9" backsplash with 2" return, 18 gauge S/S 300 series top and bowl, stainless steel leg gussets, galvanized legs and adjustable polymer feet, raised 1.5" rolled edge, 3.5" basket strainer, NSF approved

FEATURES:

Material: 18 Ga 300 Stainless steel

Backsplash: 9"H with 2" return (clip down)

Edge: Raised 1.5" Rolled edge

Drainboards: Right

Legs: 1 5/8" Galvanized steel

Feet: Polymer bullet feet (adjustable)

Basket Drain: 3.5" (Included)

NSF Certified: Yes

CONSTRUCTION:

Top and Bowl: 18 Gauge 300 series stainless steel

Leg Gussets: Stainless steel

Legs: 1 5/8" Galvanized steel

Feet: 1" Adjustable high impact polymer bullet style

PLUMBING:

1 1/8" Faucet holes on 8" centers

3.5" Waste drain



FENIX SOL

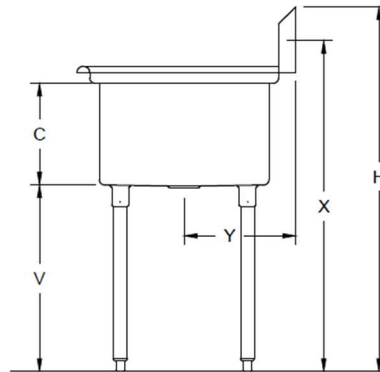
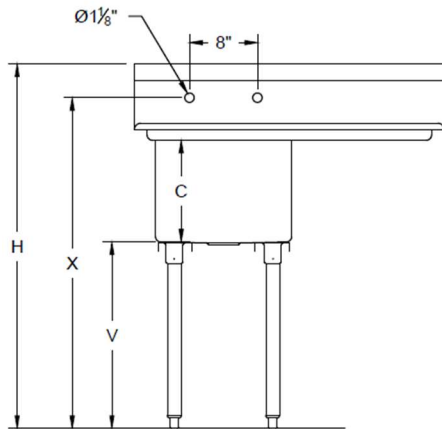
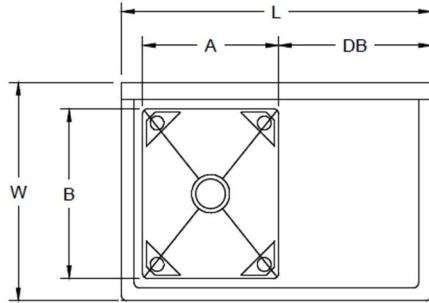
2441 Merchantile Dr. Ste B
Rancho Cordova, CA 95742

844-650-5738
info@fenixsol.com
www.fenixsol.com



SPECIFICATION SHEET

12" DEEP ONE COMPARTMENT 18 GAUGE S/S SINKS



18 GAUGE 304 S/S SPACE SAVER SINK 12" DEEP - 1 COMPARTMENT												
MODEL NUMBER	DRAINBOARD		OVERALL SIZE				BOWL DIMENSIONS			INSTALL DIMENSIONS		
	DRAIN BOARD	LENGTH	LENGTH	WIDTH	HEIGHT	WEIGHT	LENGTH	WIDTH	DEPTH	V	X	Y
			L	W	H		A	B	C			
18G-1C16X20-R18	R	18	36.5	25.8	43	47	16	20	12	22	39	13
18G-1C18X18-R18	R	18	38.5	23.8	43	48	18	18	12	22	39	11.5
18G-1C18X24-R18	R	18	38.5	29.8	43	54	18	24	12	22	39	14.5