



SPECIFICATION SHEET
HAND SINK WITH DUAL SIDE SPLASH AND KNEE VALVES



HAND SINK WITH DUAL SIDE SPLASH:

SWHS-17-SS

CONSTRUCTION:

Sink and Bowl: 18 Ga 300 Stainless Steel

Top: 18 Ga 300 Stainless Steel

SPECS:

Wall Mounted Hand Sink, dual side splash, knee valves, splash mounted faucet, 8" backsplash with 2" return, 18 gauge S/S 300 series top and bowl, 1.5" drain, NSF approved

FEATURES:

Material: 18 Ga 300 Stainless Steel

Side Splash: Dual

Backsplash: 8"H with 2" Return

Bowl: 14"L x 10"W x 5"D

Faucet Mount: Dual Knee Valve

Basket Drain: 1.5" (Included)

NSF Certified: Yes



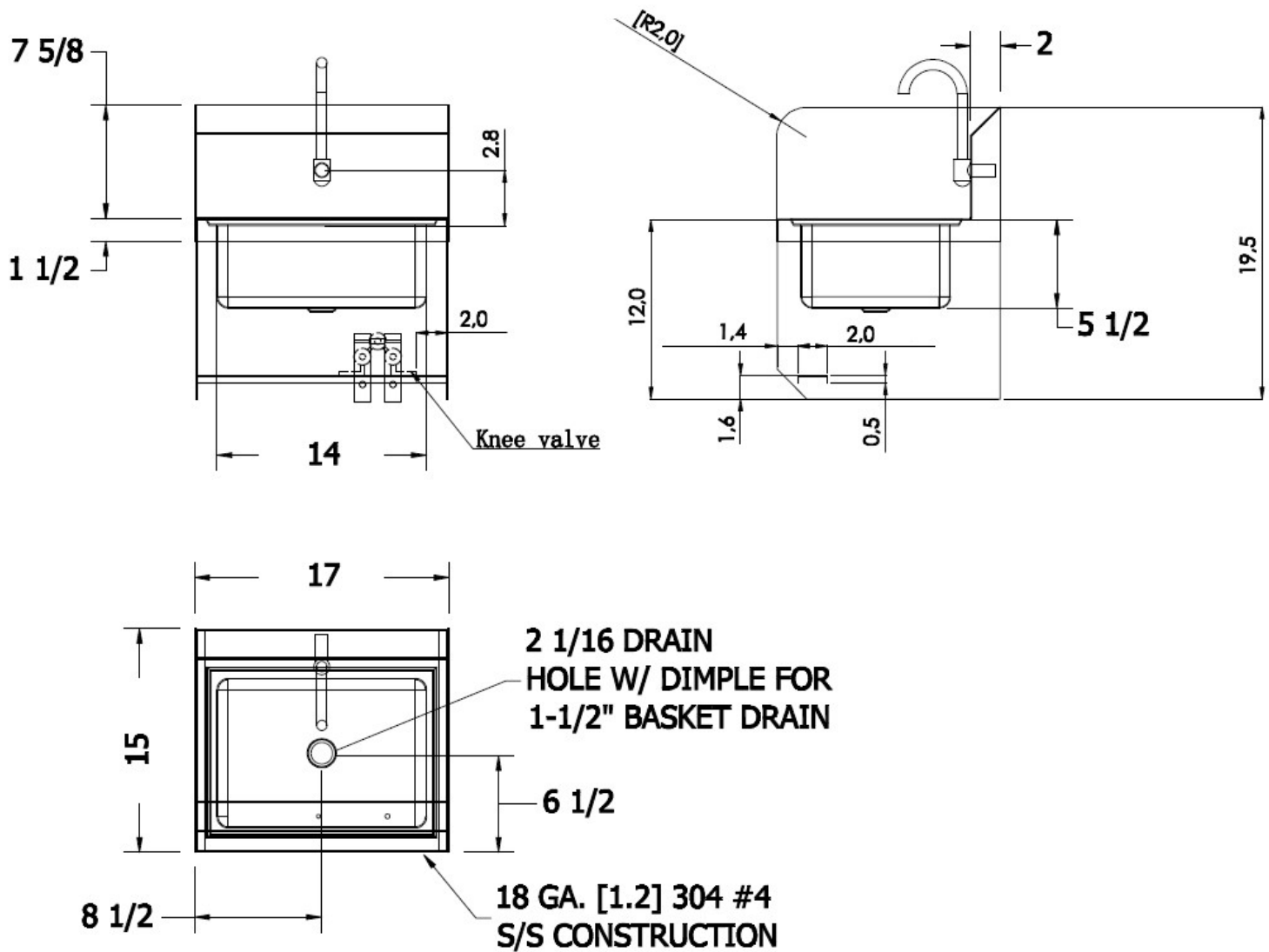
FENIX SOL

2441 Merchantile Dr. Ste B
Rancho Cordova, CA 95742

844-650-5738
info@fenixsol.com
www.fenixsol.com



SPECIFICATION SHEET
HAND SINK WITH DUAL SIDE SPLASH AND KNEE VALVES



FENIX SOL

2441 Merchantile Dr. Ste B
Rancho Cordova, CA 95742

844-650-5738
info@fenixsol.com
www.fenixsol.com